

TABLES OF DATA

Strain Report for CL4176

Strain	CL4176
Genotype	smg-1(cc546) I; dvl527 X.
Contains	Gene: smg-1 Allele: cc546 Transgene: dvl527
Properties	Species: Caenorhabditis elegans Outcrossed: x3 Received at CGC: 10 May 2007
Location	CGC
Made by	Chris Link
Remark	dvl527[pAF29(myo-3/A-Beta 1-42/let UTR) + pRF4(rol-6(su1006))]. Temperature sensitive: needs to be propagated at 15C. Upshift to check that the worms get paralyzed. This strain can only be sent to academic users and not to commercial organizations.

Figure 7. CL4176 Report from WormBase

Strain Report for CL2006

Strain	CL2006
Genotype	dvl52.
Contains	Transgene: dvl52
Properties	Species: Caenorhabditis elegans Outcrossed: x3 Received at CGC: 25 Mar 2003
Location	CGC
Remark	dvl52[pCL12(unc-54/human Abeta peptide 1-42 minigene) + pRF4]. Adult onset paralysis and egg-laying deficiency when raised at 20C. Received new stock from CL 8/2005.
Reference	1995: Link CD: 1995. <i>Expression of human beta-amyloid peptide in transgenic Caenorhabditis elegans</i> . <i>Proceedings of the National Academy of Sciences USA</i> 92 : 9368-9372. PubMed

Figure 8. CL2006 Report from WormBase

Table 2. NIAD-4 Specifications sent by Nomadics, Inc.

Specifications	
Formula	C ₁₈ H ₁₀ N ₂ OS ₂
Molecular weight	334.42
Appearance	Dark red solid
Purity	> 95%
A-β bound absorption max. (in MeOH)	475 nm
A-β bound emission max. (in MeOH)	625 nm
Ext. Coef. (475 nm)	35700 M ⁻¹ cm ⁻¹
Quantum Yield (MeOH)	15%
Affinity to Amyloid-β ₁₋₄₀	K _i = 10 nM
Storage condition	-20°C in the dark
Shelf life	6 months

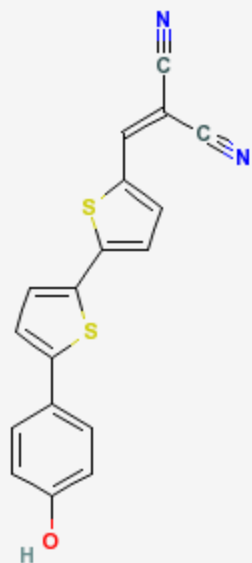


Figure 9. NIAD-4

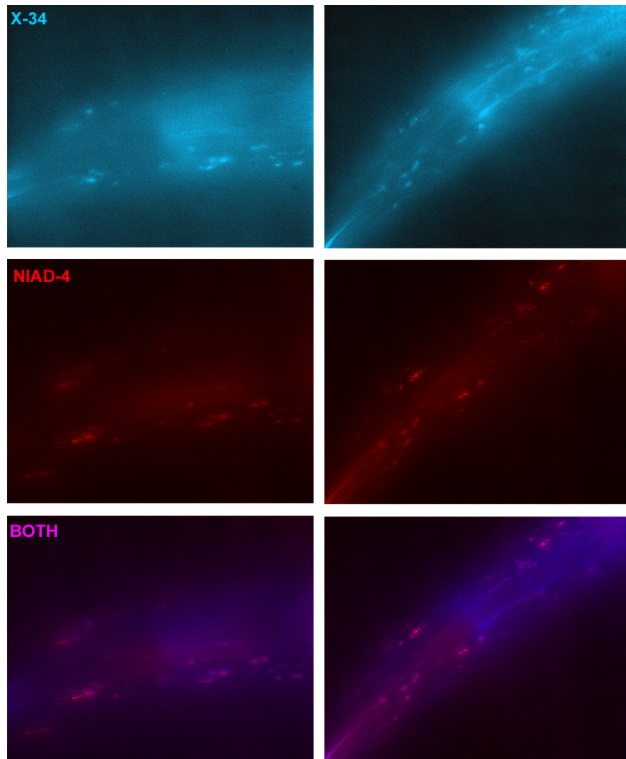


Figure 10. Sample Image from Dr. Maria Florez-McClure and Dr. Chris Link



Figure 11. CL4176 - NF

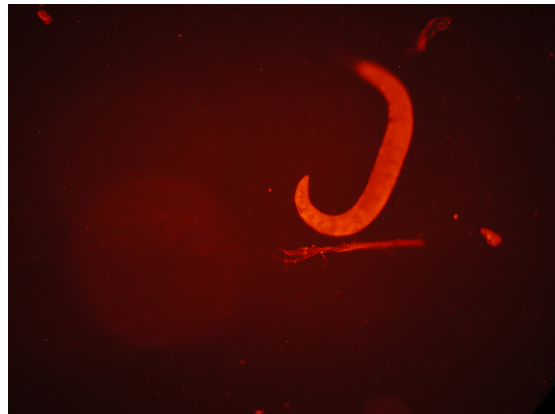


Figure 12. CL4176 - F

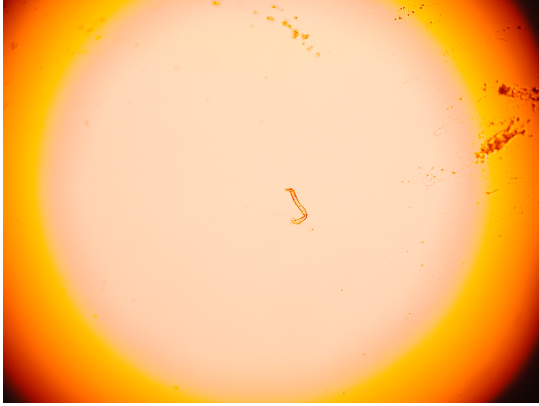


Figure 13. 10 μ M NIAD-4 Wildtype NF



Figure 16. 1 pt DMSO 1 pt 10 μ M NIAD-4 WT F

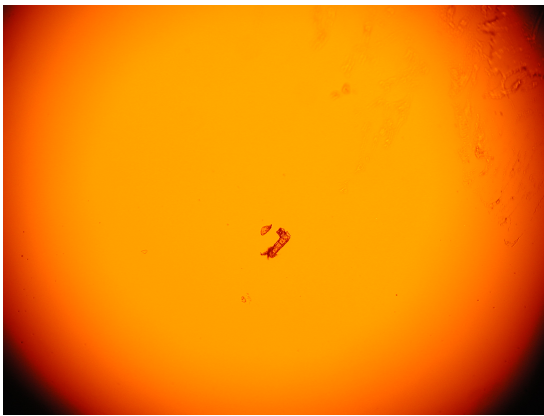


Figure 14. 1 pt DMSO 1 pt 10 μ M NIAD-4 WT NF



Figure 17. Mold

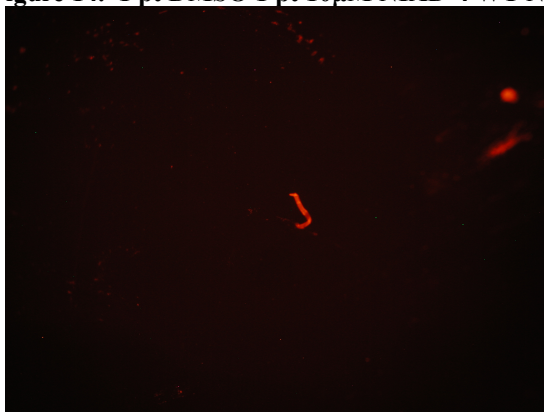


Figure 15. 10 μ M NIAD-4 Wildtype NF

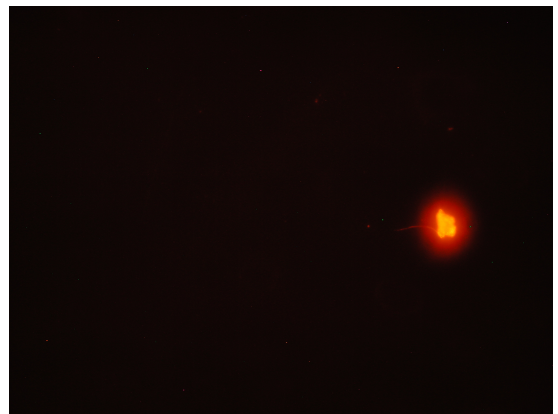


Figure 18. Mold F

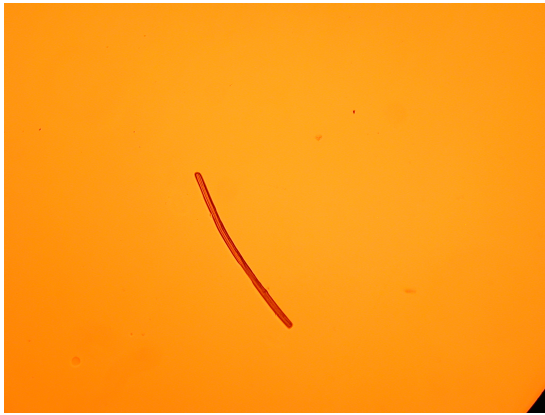


Figure 19. Mystery Object

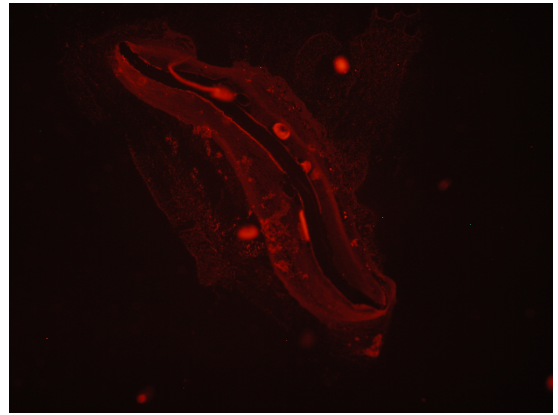


Figure 22. CL4176 F



Figure 20. CL4176



Figure 23. Eggs and Mold



Figure 21. Mystery Object F

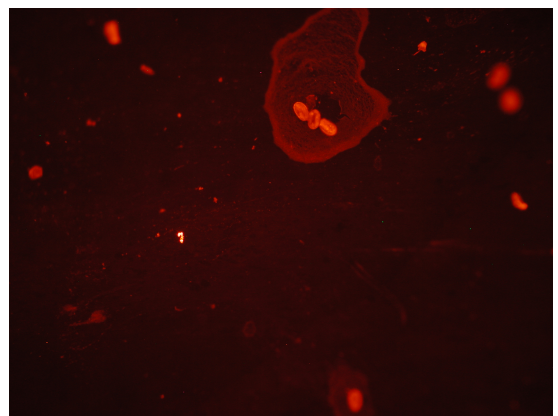


Figure 24. Eggs and Mold F

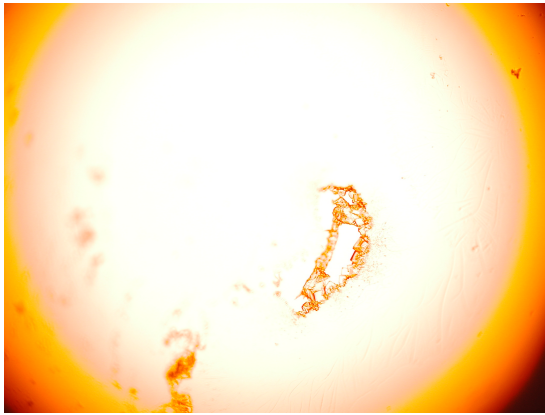


Figure 25. PBS Crystal

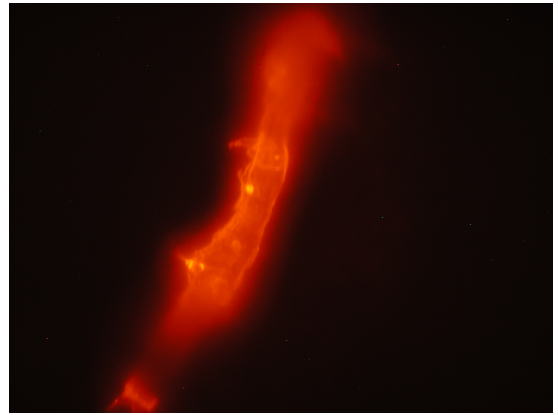


Figure 28. PBS Crystal *C. elegans* Zoom F

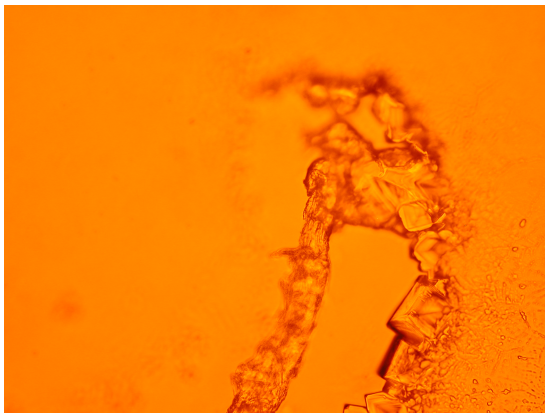


Figure 26. PBS Crystal Zoom

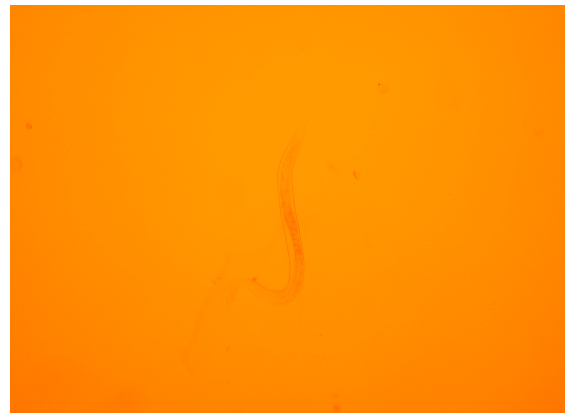


Figure 29. *C. elegans*

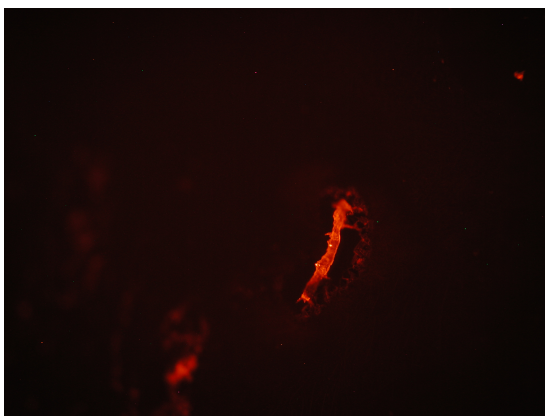


Figure 27. PBS Crystal *C. elegans* F

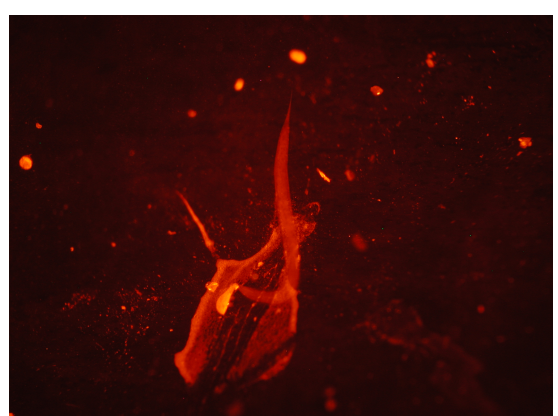


Figure 30. *C. elegans* and Excess Fluorescence

